

May's Repair Going Out of Business Auction

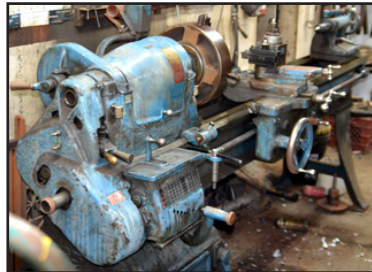
SATURDAY, OCTOBER 19, 2024 • 10:00 AM

From Bassett: 3 Miles East, 1 North, 1/2 Mile East (Roads Will Be Marked) -- Glen May 402-760-0735
LUNCH AVAILABLE

SHOP EQUIPMENT AND SUPPLIES



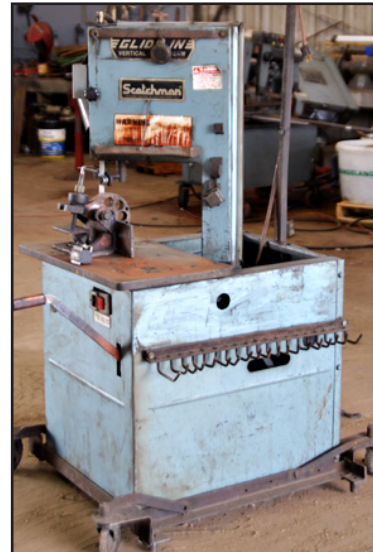
American Tool Metal
Turning Lathe



Southbend Metal
Turning Lathe



Miller Synchronwave
TIG Welder



Scotchman Vertical
Band Saw



Millermatic 200 Wire
feed w/spool gun



Westbury Milling Machine



80 Ton Hydraulic Press



Scotchman 26 Ton
Ironworker



Weatherhead Hydraulic
Hose Machine

Century Welder w/high frequency box
20 Ton Hydraulic Press • Metal Skilsaw
Beadblaster enclosed Sand Blaster
Enclosed Hot Water Power Washer
Electromatic Hot Water Pressure Washer
Several Steel Benches • Iron Bender
Porter-Cable Porta-band saw
Milwaukee Chop Saw • Tool Boxes
KBC 3-phase band saw • Large Iron Rack
Craftsman Mag Drill • Metal Saw Horses
Lots of Stack Shelving & Cabinets
Wood Shelving and Cabinets

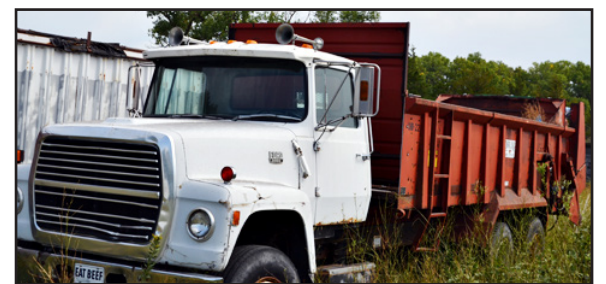
4-Old Plat Map Drawer Cabinets
10 KW Onan gas generator
Radial Armsaw
Several pair of vise grips
Large Asst cutters & tooling
Gear Pullers & Brg Splitters
2-10 Ton Porta Power • 5 Ton Hoist
Used Oil Burning Stove • C-Clamps
Amazing Heat Corn Stove & Boiler
2 Ton A-Frame Hoist
Craftsman Torch w/bottles & cart
35 KW Single & 3-phase PTO generator

Equipment



2023 Midsota 24' 16' Tilt Trlr
w/7000 lb axles

2002 PJ 34' Dual Tandem Flatbed Trlr
Case W26 Payloader • 20' Flatbed Trailer
IHC 656 Diesel Tractor • Caker on Trailer
Farmhand Manure Spreader



1985 Ford F600 Truck w/manure spreader

Schwartz Manure Spreader
2006 Ford F250 4x4 130,000 miles
(runs rough)
2019 Elston 3-pt gopher machine
Gehl 360 Skid Steer

Parts

1/4" to 1" NC grade 5 bolt bin & bolts
1/4" to 1" NC grade 8 bolt bin & bolts
1/4" to 3/4" NF grade 5 bolt bin & bolts
1/4" to 1" NF grade 8 bolt bin & bolts;
PTO yokes, sleeves & U-Joints on a board
Metric PTO Yokes & U-joints • Welding Rod
Spindles, Hubs and Wheel Brg Kits
Misc. New Tractor Parts • Dust Cap asst
Hyd Swivels & Adapters • Roller Chain & Links
Self Aligning Brgs & Pillow Block
Sprockets & Hubs & PTO adapters
New & Rebuilt Cylinders • Baler & Rake Teeth

Huge Selection of cyl repair kits • V-Belts
Several rolls of 2062 bale & stack mover chain
Shadle Sickle Sharpening Stones



bolt bin & bolts

Several Oxygen Acetylene &
Argone Bottles
Kosch, IH, NH Mower parts
Bulk Hydraulic Hose
Front tractor rims
H&S Wheels
Rowse 48 Tooth Rake wheels
Huge asst of iron
Large asst. DOM tubing &
chrome shaft



McKee Stack Mover w/bale arms

**Many More Pictures Posted
On Our Website**



www.heartlandauction.net heartlandauction95@gmail.com
Auctioneers: Mervin Buoy, 402-760-0759
Clerk: Jan Buoy, 402-760-1555

TERMS: Cash or check with bank letter of credit. Complete payment day of auction. Nothing removed until settled for. All items must be removed following sale. Not responsible for injury, accident or theft. All items sell to the highest bidder "as is, where is". Buyer is responsible to pay for all items regardless of faults. No warranties or representation of any kind as to the condition or use of these items are either implied or intended. All announcements day of auction take precedence over anything printed or implied.